



Kunx̱alas Management Plan

July 2011



Council of the
Haida Nation



Cover Photo: Owen Jones

Foreward

“When everything else was lost, the people of Koga put themselves on the line and became the property of someone else.

The Haida translation of KunXaalas is pierced nose.”

Guujaaw

Table of Contents

Foreward	i
Table of Contents.....	ii
1.0 Introduction	1
1.1 Management Plan Purpose	1
1.2 Planning Area	1
1.3 Planning and Policy Context.....	5
1.4 Planning Process.....	6
2.0 Values of Kunxalas.....	7
2.1 Significance and Role in the Protected Areas System.....	7
2.2 Cultural Heritage	7
2.3 Natural Heritage.....	8
2.4 Recreation	9
2.5 Respectful Use of Natural Resources	9
3.0 Management Direction	10
3.1 Vision	10
3.2 Management Issues, Strategies and Performance Measures	10
3.3 Zoning.....	16
4.0 Plan Implementation	19
4.1 Implementation Resources	19
4.2 Priority Implementation	19
4.3 Reporting.....	19
4.4 Management Plan Review	19
Appendix 1 – Appropriate Uses Chart.....	22
Appendix 2 – Heritage Special Feature Sites	24
Figure 1. Regional Context Map.....	3
Figure 2. Kunxalas Map	4
Figure 3. Kunxalas Management Zone Map	19

1.0 Introduction

The Haida Nation and the Province of British Columbia have a dispute of title over all of Haida Gwaii, but through planning and negotiations the Haida Nation and the province have taken steps toward reconciliation of interests.

Kunxalas is now formally protected by both the Haida Nation as a Haida Heritage Site and the Province of British Columbia as a conservancy. For the purposes of this management plan, the area will be referred to as Kunxalas. Other areas established as both Haida Heritage Sites and conservancies will be referenced as protected areas in this document. The Haida Nation and the province through their respective authorities are now working together in managing this area.

This management plan does not have a complete or comprehensive listing of all cultural features or cultural inventory in the area. There are far more cultural features, many that are not inventoried, and other cultural values which are held in secret by the Haida Nation.

Preparation of this management plan for Kunxalas¹ has been jointly undertaken by the Council of the Haida Nation and the Province of British Columbia's Ministry of Environment (hereafter referred to as the "Parties").

1.1 Management Plan Purpose

The purpose of this management plan is to:

- establish the vision, long-term strategic direction, guidance, and acceptable uses for Kunxalas;
- ensure that any activities are respectful of the natural values and not in conflict with Haida social, ceremonial and cultural uses;
- ensure protection for lands and seas in their natural state;
- describe the background and legal context of Kunxalas; and,
- manage visitor use.

1.2 Planning Area

Kunxalas has been used by Haida people and given them life since time immemorial.

Kunxalas is located along the northeast coast of North Moresby Island, about 15 km southeast of the community of Sandspit (Figure 1). Kunxalas is part of an archipelago-wide system of protected areas². In total, half of the land base of Haida Gwaii is now in protected status. The terrestrial component of Kunxalas covers 3,355 hectares. It includes the area known as Sheldens Bay, Gray Bay, Cumshewa Head, and three small islands known as

¹ Phonetic pronunciation is "Koonchalas"

² Which includes Gwaii Haanas, several provincial parks and ecological reserves and ten other protected areas.

Cumshewa Island, Kingui Island, and Haans Islet. Kunxalas contains a popular campsite at Gray Bay and a coastal hiking trail that leads to Cumshewa Head (Figure 2). The elevation range is from sea level to 417 metres.

A marine component/foreshore area has been delineated by a joint Haida Nation and Province of British Columbia process that covers an area of 12,364 hectares. Boundaries for the marine portion of the protected area are brought forward first by Order in Council, then by legislation to ensure equal protection across the terrestrial and marine components. This management plan will provide direction for this marine area as well.

There are two other protected areas in the vicinity of Kunxalas. The eastern edge of Damaxyaa is less than 10 kilometres to the north, and K'uuna Gwaay is located approximately 5 kilometres to the south across Cumshewa Inlet (although the marine components are adjacent). Gwaii Haanas is less than 20 kilometres to the south.

One reserve³ is within the boundaries of Kunxalas and will remain as reserve and not a part of the Kunxalas management plan.

On the west side Sheldens Bay, just west of Kunxalas is Lot 167 which is fee simple property.

Access to Kunxalas is primarily by gravel road from Sandspit. Alternatively, access may be by boat from Moresby Camp via Cumshewa Inlet or south from Sandspit along the eastern coast of Moresby Island. There are some sheltered coves suitable for anchoring including McCoy Cove. McCoy Cove is on the southern edge of Kunxalas and it served as a location of a historic trading post in the 1870s. Floatplane and helicopter access are possible at suitable shoreline and onshore landing locations.

³ Cumshewas Reserve #7.

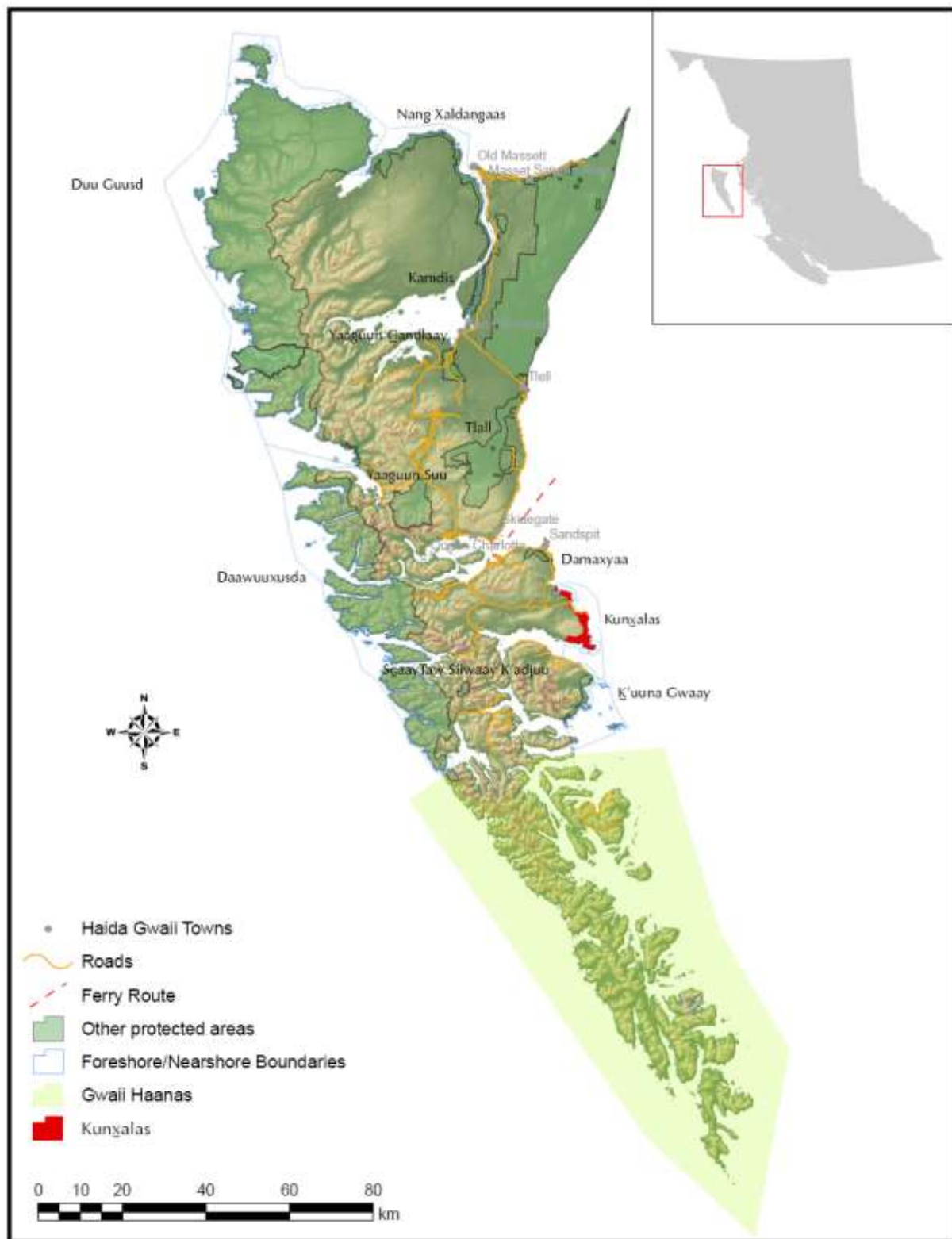


Figure 1: Regional Context Map

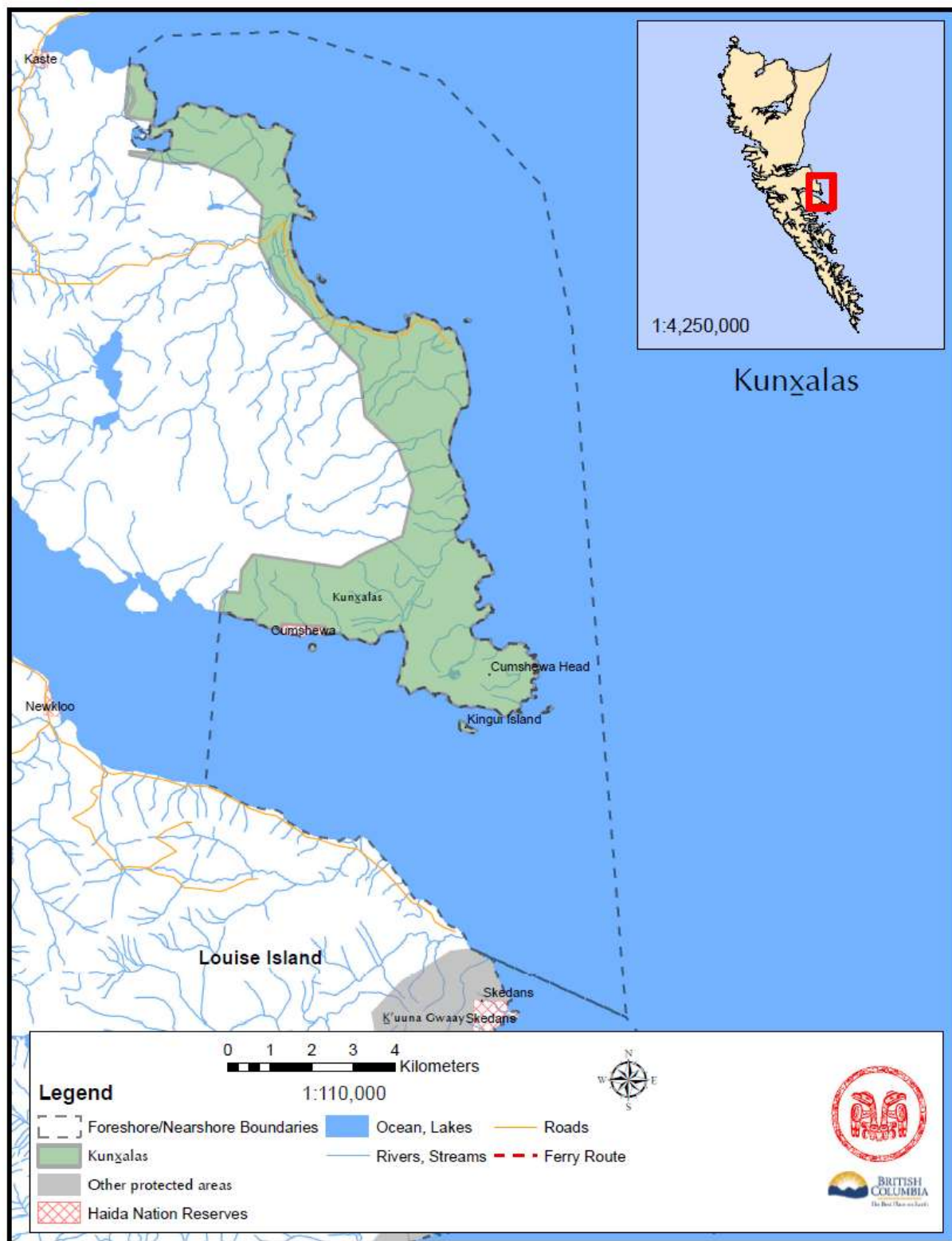


Figure 2. Kunxalas Map

1.3 Planning and Policy Context

The Parties acknowledge each other's respective authorities and are cooperating in the management of Kunx̱alas. The Haida Nation and the Province of British Columbia have agreements on land use and reconciliation and use their respective lawmaking authorities to enact this management plan. For example, permits are to be jointly reviewed and adjudicated as per processes such as the Solutions Table that are consistent with existing agreements between the Haida Nation and the Province of British Columbia. Additionally, an appropriate government to government forum will be utilized to address collaborative management of the protected areas.

A brief chronological history is summarized below.

According to archaeological evidence, Kamdis has been occupied for at least 10,000 years by the Haida people although Haida oral history indicates much longer.

In 1996, a 1,200 hectare area between Gray Bay and Cumshewa Head was identified by the Province of British Columbia as a Goal 2 Study Area under the Protected Areas Strategy. The special features that merited consideration for protection included the presence of a regionally significant coastal hiking trail and an excellent diversity of habitats: beaches (sand, shingle, cobble/boulder, and bedrock), maritime non-forested fringe, sea spray forests, upland old-growth forest, wetlands and a number of uncommon plant communities.

In 2004, the Haida Land Use Vision based on the principals of Yah'guudang (respect) was put forward by the Council of the Haida Nation to guide deliberations towards a sustainable land use plan for Haida Gwaii. In 2007, the Haida Gwaii Strategic Land Use Agreement (SLUA) supported the Haida Land Use Vision which included the protection of Kunx̱alas.

The SLUA stated that the new protected areas were to be set aside for cultural, spiritual, ecological, and recreation purposes, and the areas were to be maintained for the benefit, education and enjoyment of present and future generations. The agreement was formally signed off by the Haida Nation and the Province of British Columbia on December 12, 2007.

On December 17, 2008, Order in Council No. 977/2008 established the terrestrial component of Kunx̱alas. On October 29, 2009, Kunx̱alas was named and described in legislation by passing and providing Royal Assent to Bill 10-2009 (*Protected Areas of British Columbia Amendment Act*, 2009).

The Kunst'aa guu – Kunst'aayah Reconciliation Protocol was signed by the Haida Nation and the Province of British Columbia on December 11, 2009. On June 3, 2010, Bill 18 — 2010, entitled the *Haida Gwaii Reconciliation Act*, received Royal Assent. This bill contains amendments that have implications to protected area planning and management on Haida Gwaii. This management plan is consistent with the intent of the *Haida Gwaii Reconciliation Act*.

In October 2010, the Haida Nation, at the Annual House of Assembly, adopted the KaayGuu Ga ga Kyah ts'as – Gin 'inaas 'laas waadluwaan gud tl'a gud giidaa (Haida Stewardship Law). The purpose of the Haida Stewardship Law is to ensure the well being of Haida Gwaii and create an economy that is respectful of the land, culture and people through establishing structures to manage the forests and the land, which include the manner in which humans interact with the natural world. This management plan is consistent with the intent of the Haida Stewardship Law.

1.4 Planning Process

The Parties initiated management planning for Kunxalas in the fall of 2009 as part of a broader effort to prepare management plans for all eleven new protected areas on Haida Gwaii.

Area descriptions were developed from available information for each protected area to identify important cultural and natural values, as well as recreational and economic interests. Individual management plans incorporated information from the area descriptions.

Public informational sessions were jointly held by the Parties in the communities of Old Massett, Masset, Port Clements, Skidegate, Queen Charlotte and Sandspit in January 2010 as part of a series of public consultation sessions being held to implement ecosystem based management measures on Haida Gwaii. Protected area maps with proposed marine boundaries were shared with the public and information was provided regarding the management planning process, and what opportunities would exist for future public review and input.

In February, March and April 2010, draft management plans were developed for public review and presented at open houses held in Old Massett, Tlell, Skidegate and Sandspit. The public review drafts were also posted on the Haida Nation website and the BC Parks' website for broader comment and circulation.

2.0 Values of Kunxalas

2.1 Significance and Role in the Protected Areas System

Kunxalas:

- has high cultural values including at least four village sites or seasonal camps, registered archaeological sites such as culturally modified trees and shell middens within the forest;
- is part of an archipelago-wide system of protected areas that now protects half of the land base of Haida Gwaii;
- protects a variety of coastal marine values, including areas of extensive kelp beds and several small seabird colonies; and,
- contains a popular frontcountry campsite and day-use area at Gray Bay and a coastal hiking trail that leads to Cumshewa Head.

2.2 Cultural Heritage

The people of the Haida Nation have occupied and collected food and materials from Kunxalas since time immemorial. The Haida made their homes and have at least 4 village sites and seasonal camps within Kunxalas.

This management plan does not have a complete or comprehensive listing of all cultural features or cultural inventory in the area. There are far more cultural features, many that are not inventoried, and other cultural values which are held in secret by the Haida Nation.

Several recorded archaeological sites contain a number of cultural values. These include culturally modified trees (CMTs), shell middens, a habitation feature, and human remains. Further work will undoubtedly reveal even more of these treasures.

Skedans is a nearby historical trade and potlatching site where the Haida exchanged dried halibut, dried seaweed, herring roe and canoes, for eulachon grease, dried berries, Mountain Goat wool and horns. It is now a reserve and the site of a Watchmen camp.

The management plan provides for the continuance of Haida culture through traditional use of the area. Some examples of traditional use within Kunxalas include monumental cedar and cedar bark harvesting, seaweed harvesting, medicinal plant harvesting, hunting, fishing, trapping and food gathering. Kunxalas also provides the setting for spiritual use and the physical expression of culture through monumental art such as totems or establishment of traditional style infrastructure.

2.3 Natural Heritage

Kunxalas is located within the Skidegate Plateau terrestrial ecosection and the marine component that has been recommended for protection is within the Hecate Strait marine ecosection.

Kunxalas is classed as Coastal Western Hemlock, Sub-montane wet hypermaritime (CWHwh1) according to the province's Biogeoclimatic Ecosystem Classification (BEC) system.

Several rare ecological communities are found in Kunxalas. The area supports the mature Sitka spruce-Crab apple/Willow ecological site association which is not protected elsewhere on Haida Gwaii. Fens and marshes, swamp wetlands with Western redcedar, skunk cabbage and Sitka spruce and cedar/shorepine bog-forest complexes border waterways and lake margins. Forested areas are mainly Coastal Western hemlock/Western redcedar and Western hemlock/Sitka spruce site associations.

There is an old record of sea bluebells on the beach at Gray Bay (blue listed). The area contains other important ecological associations:

- the Western redcedar-Sitka spruce/Conocephalum community (blue listed)⁴;
- the Western redcedar-Sitka spruce/skunk cabbage community (blue listed);
- the Western redcedar-Sitka spruce/sword fern community (blue listed); and
- the Sitka spruce/Lily-of-the-valley community (red listed).

This area has transitional lowland – plateau topography which results in high habitat diversity. Rock drumlins are found in the shale faces on Cumshewa peninsula. The rocky steep land is characterized by talus, rocky outcrops, cliffs, gullies and runnels. The northern half of this area is dominated by marine sedimentary rocks and the southern portion of the area is dominated by intrusive rocks.

The marine component is an area of high biodiversity, including an extensive kelp forest in Fairbairns Shoal that is a unique feature along the east coast of Moresby Island. Sea Lion haulouts exist on the north and south section of Cumshewa Inlet and Cumshewa Rocks, off the mouth of the inlet. Kunxalas contains Northern Abalone and Geoduck habitat. Kunxalas contains fish-bearing streams that are known to host Coho Salmon, Dolly Varden, Rainbow Trout, Cutthroat Trout and Coastrange Sculpin.

The area hosts numerous listed species including Marbled Murrelets (red listed). Pigeon Guillemot breeding pairs frequent the nearshore and Northern Goshawks (laingi subspecies red listed) may inhabit the area's 2,350 ha of old-growth forest (>250 years old).

⁴ Blue list = list of ecological communities, and indigenous species and subspecies of special concern in B.C. Red list = list of ecological communities, and indigenous species and subspecies that are extirpated, endangered or threatened in B.C. (<http://www.env.gov.bc.ca/atrisk/faq3.html#1>).

Of recent concern is the presence of introduced mammals. In particular, Black-tailed Deer and Raccoons pose a threat to local ecosystems and species. Several non-native invasive plants have also been recorded in the Kunxalas area including burdock spp., bull thistle, Canada thistle, and sowthistle spp.

2.4 Recreation

A variety of recreational values exist in Kunxalas. The area is on an important boating and kayaking route to Gwaii Haanas and is used for fishing and is occasionally favourable for watching whales or other marine mammals. McCoy Cove is the location of a good anchorage.

There is also a regionally significant hiking trail along the coast, easily accessed by road at Gray Bay that connects a variety of beaches. Trails also lead to Sheldens Lagoon (Dogfish Beach – has remnants of a dam and a settler's cabin from 1907) and Cumshewa Head which is a 24 km round trip. A popular frontcountry camping area and day-use site is located at Gray Bay, and a smaller one at Sheldens Bay.

Other recreational sites of interest include the remains of an old store (1869) at McCoy Cove, the site of a Loran communications tower at Gray Point and a navigational light at Kingui Island.

The recreation and tourism opportunities, particularly recreational kayaking, in Kunxalas are enhanced by proximity to marine travel routes and other marine-access protected areas, including K'uuna Gwaii which is less than 5 km to the south.

2.5 Respectful Use of Natural Values

The Haida trap throughout Kunxalas.

The province has issued one trapline license.

3.0 Management Direction

3.1 Vision

Haida culture is the interrelationship of the people and the land.

Kunxalas will remain as the ancestors of the Haida Nation have known it. Kunxalas and the remaining protected areas continue to provide the sustenance and spiritual values to this and future generations.

Kunxalas contributes to the protection of representative Haida Gwaii fauna including endemic⁵ taxa and rare terrestrial and intertidal ecosystems and biophysical features.

Kunxalas provides road accessible ocean-side camping in a dramatic coastal setting and access to a system of trails appropriate for those who want to experience the eastern coastline of Moresby Island on foot in a wilderness environment.

3.2 Management Issues, Strategies and Performance Measures

Management strategies and objectives for Kunxalas have been identified through a thorough analysis of key issues that may affect the balance between protection and use. The management plan will always consider the well being of the lands and marine areas first.

Knowledge, education and on-site monitoring will be primary tools of management.

The next stage of planning will be to develop site level management plans for select high use and sensitive areas.

Cultural Heritage

Key issues which may affect achievement of stated Haida cultural values in Kunxalas are described. These issues relate primarily to the lack of detailed inventories on key values. Filling information gaps in the early stages will help prevent current and potential impacts from recreational use and other activities. Identified strategies focus on resolving or managing these issues (Table 1).

⁵ native to, or confined exclusively to a particular region

Table 1. Goals, Objectives, Issues, Strategies and Performance Measures for Cultural Heritage

Overall Management Goal: Preserve and maintain Haida social, ceremonial and cultural uses.			
Objective	Issue	Strategy	Performance Measure
Identify, protect and maintain Haida Nation cultural heritage features, archaeological sites and traditional use locations.	Many cultural heritage features, archaeological sites and traditional use locations are well documented, but information for some areas may be incomplete. Where there is limited information it is difficult to ensure that the values are protected.	Continue historical and ethnographic research, cultural heritage field mapping and inventory programs where knowledge gaps exist.	Completed historical and ethnographic research and cultural heritage field inventories.
	Certain uses can cause unintended disturbance to cultural heritage and traditional use sites and features.	Identify and report where cultural heritage features, archaeological sites and/or traditional use resources or sites exist within areas that have periodic human use.	Prior to any site specific development or within areas that receive recreational use, ensure cultural heritage sites and features identified.
		Identify and evaluate extent of threats and implement site specific protective measures for sensitive or special feature sites, such as those in Appendix 2, which may include: - marking areas as off-limits; - focusing use away from sites; - restricting aircraft access; - developing site level management plans for select high-use and culturally sensitive areas; - developing best management practices for aircraft, and pleasure craft activities in anchorages; and/or, - public information/interpretation initiatives.	Appropriate measures established at sensitive sites.
		Consider opportunities for monitoring activity at most vulnerable sites.	Monitoring of activities achieved.
		Extend the Haida Watchmen program, and identify potential locations to support establishment of Watchman sites.	Recommendations from assessment implemented.
Ensure that new uses are compatible with Haida traditional activities.	Many traditional and sustenance harvesting sites and activities are well documented, but information for some areas may be incomplete or withheld for traditional reasons and customs. Where there is limited information it is difficult to ensure that the values are protected.	Support efforts to identify and monitor traditional and sustenance harvesting sites and activities where knowledge gaps exist.	Completed inventories of traditional use and sustenance harvesting areas.
		Visitors respect traditional reasons and customs for privacy through dialogue and understanding with either Party.	Visitors are respectful people on the land.
		Support local stewardship efforts to rebuild abalone populations.	Monitoring indicates abalone levels can support a sustainable food fishery.
	There are traditional cultural use activities that can benefit from monitoring or facilitation using existing Haida Nation programs.	Identify uses (such as cultural cedar harvesting) that benefit from continued facilitation from the Haida Nation to ensure sustainable and ongoing access to	Traditional users are engaged in specific uses and programs.

Overall Management Goal: Preserve and maintain Haida social, ceremonial and cultural uses.

Objective	Issue	Strategy	Performance Measure
		traditional resources, recognizing that many activities are preferable to occur in non-protected areas.	Linkages are made with ongoing Haida Nation and provincial administrative processes (such as Haida Gwaii cultural wood permit process).

Natural Heritage

Key issues which may affect achievement of stated biological diversity objectives in Kunxalas have been identified. These issues relate primarily to potential impacts from introduced species and recreational use within Kunxalas. Identified strategies focus on resolving or managing these issues (Table 2).

Table 2. Goals, Objectives, Issues, Strategies and Performance Measures for Natural Heritage

Overall Management Goal: Protect and maintain the diversity of terrestrial, intertidal and marine ecosystems.			
Objective	Issue	Strategy	Performance Measure
Identify and protect regionally important, and rare and at risk ecosystems, ecological communities and species. ⁶	Lack of inventory of values results in unintended impacts on the protected area's rare and at risk ecosystems, ecological communities and species.	Identify research and inventory needs. Support programs designed to fill information gaps with emphasis on rare and at risk ecosystems, ecological communities and species.	Number of initiatives underway that enhance information.
		Identify and support restoration initiatives for rare and at risk ecosystems and species, particularly logged riparian areas and nesting seabird habitats.	Comprehensive knowledge base achieved.
			Integrity of riparian/fish habitat, seabird nesting habitats, and rare plant assemblages restored/maintained.
	Marine bird breeding, nesting and foraging sites require special considerations during sensitive periods. There is evidence that current use is	Increase public and visitor awareness about seabird sensitivities and provide guidelines for appropriate conduct to avoid impacts in seabird areas.	Information package and guidelines available regarding seabird needs, approach standards, etc., and are utilized by public and visitors to minimize impacts.

⁶ To recognize the likely occurrence of distinctiveness on Haida Gwaii, rare is applied to Conservation Data Centre (CDC)-listed species and ecological communities as well as identified locally rare or at risk species and ecological communities.

Overall Management Goal: Protect and maintain the diversity of terrestrial, intertidal and marine ecosystems.

Objective	Issue	Strategy	Performance Measure
	causing site-level disturbance and declines in the abundance and distribution of rare and at risk ecosystems, ecological communities and species.	Where necessary, limit access to protect rare and at risk ecosystems, ecological communities and species such as nesting seabirds.	Access restrictions in place where appropriate.
		Support efforts to maintain integrity of seabird habitat, and minimize the risk of injury and mortality to seabirds.	Development does not occur within seabird nesting areas. Activities that alter shoreline and/or intertidal or inshore marine waters are prevented.
	Introduced species are displacing and harming native flora and fauna. Specific concerns are related to deer browsing, and predation of seabird colonies by rats and raccoons.	Evaluate presence, distribution and threat of introduced species.	Presence, distribution and threat of introduced species is documented.
		Undertake prevention initiatives and introduced species control programs on a co-ordinated and priority basis. Mechanical and biological methods are preferred. Monitor and report on efficacy of efforts.	Control programs in place. Target species controlled or removed. Disturbance and predation levels reduced. Monitoring reports completed.
		Support efforts in on-going introduced species research, education and public information programs.	Programs supported.
	Without knowing the effects of global climate change and sea level rise on ecosystems, ecological communities and species, it is difficult to know how to mitigate negative impacts to these values.	Support programs designed to monitor environmental change and impacts.	Monitoring programs supported.
		Initiate adaptive management practices and processes if required.	Adaptive management initiated.
	Protect intertidal and subtidal habitat to help sustain the abundance and distribution of marine species.	Work with other agencies to monitor and, if necessary, consider limiting recreation and other activities.	Populations of intertidal and subtidal species are monitored and habitat sustained.
	Protect paleontological resources.	Support programs to educate public and visitors of the importance of paleontological resources remaining intact.	Public education and awareness is enhanced.
		Monitor and inventory fossil sites in Kunxalas.	Fossil sites remain intact.

Recreation

Key issues which may support provision for recreational opportunities in Kunxalas are described. These issues relate primarily to maintenance of the current infrastructure and trail system, and potential impacts from motorized vehicles and recreational overuse. Identified strategies focus on resolving or managing these issues (Table 3).

Table 3. Objectives, Issues, Strategies and Performance Measures for Recreation

Overall Management Goal: Provide for limited commercial and public recreational use in a largely undisturbed natural environment.

Objective	Issue	Strategy	Performance Measure
Maintain current recreational features and facilities and preserve their quality and appeal over the long term.	There is a need to determine appropriate and respectful approaches to recreational visits in Kunxalas. Where there is limited information it is difficult to ensure that the values are protected.	Develop a baseline inventory of structures and current and potential recreational uses, with emphasis on use or sites near cultural or natural features of interest.	Completed baseline inventory of recreational opportunities, structures and use.
		Implement a Backcountry Recreational Impact Monitoring (BRIM) assessment on current recreation sites.	Annual frontcountry site inspections completed with BRIM reports every three years. Bi-annual backcountry site inspections completed with BRIM reports every four years.
	Recreational visitors are limited by aging and deteriorating access roads and recreational facility infrastructure at Gray Bay and Sheldens Bay sites.	Maintain current access road conditions, and maintain standards and level of campsite and day use facility development.	Preventative and annual maintenance of existing road network and facilities.
	Recreational use can impact other heritage and natural values.	Develop criteria to ensure recreational use is compatible with the cultural and natural heritage features or values.	Criteria are developed to determine acceptable limits of impacts, and BRIM reports are used to inform adaptive management on a site specific basis.
Provide visitors with a range of opportunities and experiences.	Trail system established but not well maintained recently, requires regular upkeep.	Maintain access to Secret Cove Trail (1 kilometer in length) and manage for higher levels of use as a day-use destination area.	Trail accessible and well maintained as warranted by level of use.
		Maintain access to Cumshewa Head Trail (12 kilometres in length), consider possibility for development of shelters and manage for low-use, multi-day trips in a wilderness environment.	Trail accessible and shelters developed if appropriate and maintained as warranted by level of use.
	Use of motorized vehicles on Gray Bay beach below high tide line impacts visitor experience and condition of intertidal marine environment.	Prohibit use of motorized vehicles on Gray Bay beach during summer period of July – September when visitor use is highest. ⁷	From July to September, motorized vehicles are not present on Gray Bay beach below high tide mark. Quality of visitor experience is maintained.
	The current level of public awareness of available recreation opportunities affects the ability to meet economic objectives.	Identify recreation opportunities and facilities in promotional and marketing materials in consideration of existing cultural activities.	Development and distribution of promotional information and materials.
		Support development of on-site public interpretation media.	On-site public interpretation facilities developed.

Respectful Use of Natural Values

Key issues which may affect achievement of stated objectives related to the respectful use of Kunxalas relate primarily to the potential conflict between the use of and potential impacts on the cultural and natural values that have been identified. Identified strategies focus on resolving or managing these issues (Table 4).

⁷ Unless designated as a "Person with Disabilities" (PWD) under British Columbia or other government programs.

Table 4. Goals, Objectives, Issues, Strategies and Performance Measures for Development or Use of Natural Values⁸

Overall Management Goal: Provide for compatible opportunities where appropriate.			
Objective	Issue	Strategy	Performance Measure
Identify appropriate uses and support the delivery of local economic benefits.	Small-scale ⁹ tree removal is an acceptable management option when required for human health and safety or to facilitate approved development or for ecological restoration or forest health management projects.	Identify appropriate opportunities for small-scale tree removal.	All projects compliant with management plan direction.
	Current and future commercial uses by the Haida Nation including infrastructure development may be needed to enhance the visitor experience.	Proposals will be subject to meeting the goals, objectives and protection of values outlined in this management plan.	Visitor experience is enhanced by cultural infrastructure.
	Harvest of forest botanicals ¹⁰ by Haida medicinal practitioners will continue in Kunxalas. Any harvesting of forest botanicals by others can be permitted if the harvest is sustainable, and will not impact identified values or conflict with other management objectives.	Authorizations will not be issued to any individual that may compromise the natural values.	Monitor harvest levels for different botanicals.
		Based on demand, identify sustainable commercial harvest levels for different forest botanicals (such as mushrooms or berries).	Number of forest botanicals with sustainable harvest levels established.
		Specific proposals for access will be considered in the context of maintaining cultural and natural values.	All proposals are compliant with management plan direction.
		To guide conditions for commercial permit approvals, consider method and scale of harvest (quantity over area), location (to gauge degree of compatibility with traditional or recreational users), and level of benefit to local economy.	Commercial use is consistent with balancing traditional/sustenance use, ecosystem integrity and local economic benefit.
	Harvest of marine plants ¹¹ , (including seaweed), herring spawn on kelp, or shellfish by Haidas will continue in Kunxalas. Harvesting by others can be permitted if the harvest is sustainable and will not impact identified values or conflict with other management objectives.	Specific proposals for access will be considered in the context of maintaining cultural and natural values.	All proposals are compliant with management plan direction.
		To guide conditions for commercial permit approvals, consider method and scale of harvest (quantity over area), location (to gauge degree of compatibility with traditional/sustenance use), and level of benefit to local economy.	Commercial use is consistent with balancing traditional/sustenance use, ecosystem integrity and local economic benefit.

⁸ Natural resource uses and developments must be consistent with the cultural, natural and recreational purposes of Kunxalas.

⁹ A few trees, or less than 1 hectare in area.

¹⁰ Forest botanicals are non-timber-based products gathered from forest and range land with seven recognized categories: wild edible mushrooms, floral greenery, medicinal products, fruits and berries, herbs and vegetables, landscaping products, and craft products.

¹¹ Marine plants are regulated under Section 24 (1) of the British Columbia *Fisheries Act*.

Overall Management Goal: Provide for compatible opportunities where appropriate.

Objective	Issue	Strategy	Performance Measure
		Commercial marine harvest activities will not be permitted in Management Unit Type 1.	Commercial marine harvest does not occur in Management Unit Type1.
	The nature of economic benefits for the Haida Nation in Kunx̱alas has not yet been defined.	Utilize an appropriate government to government forum to access economic opportunities for the Haida Nation.	Develop and maintain an economic plan for protected areas on Haida Gwaii that assists Haida individuals and businesses to take advantage of economic and employment opportunities.

3.3 Zoning

Zoning assists in the planning and management of protected areas. In general terms, zoning divides an area into logical units to apply consistent management objectives. The management units identified in Kunx̱alas are in accordance with Haida Gwaii Yah'guudang - respect for all living things - and reflect the intended land use, the acceptable level of development and use, and the level of management required (Figure 3).

The following three units have been identified within Kunx̱alas and uses have been deemed appropriate for each of the units are identified in Appendix 1.

Management Unit Type 1

Management Unit Type 1¹² is an area within Kunx̱alas that may experience significant recreational use, but the primary goal is to protect and maintain Haida cultural features and provide for social and ceremonial uses. The unit covers the northernmost portion of Kunx̱alas near Sheldens Bay, but also the coastal shoreline from the Cumshewa Reserve to McCoy Cove. It includes the village of Stawas, as well as Haans islet (Gwaii islet) and the southeast corner of Cumshewa Head (Kunx̱alas village).

The purpose of the unit is to protect these significant features in the context of a living Haida culture. Sensitive heritage special feature sites, such as village sites, are identified in Appendix 2. These sites are for cultural and spiritual use including the special use by youth and elders. These areas will receive site level management plans and protective measures which may include: restricting and/or limiting access or the development of best management practices for aircraft and pleasure craft activities in anchorages.

¹² This unit corresponds to the BC Parks Cultural Zone.

Management activities in this unit will focus on protecting cultural and natural heritage values. Management efforts will be directed to ensuring that access and the use of this area occurs in such a way that the cultural and natural heritage values are maintained.

Management Unit Type 3

Management Unit Type 3¹³ encompasses the eastern shoreline of Moresby Island from Gray Point to the northern side of Gray Bay, and a small site on Sheldens Bay. The unit includes the main access roads leading to Sheldens Bay and Gray Bay, the beach areas, the camp sites and facilities, and the surrounding day use areas. The first 2 kilometres of the Cumshewa Head Trail (as far as Gray Point) are also included within this unit.

The purpose of the unit is to provide a range of recreational opportunities such as camping, hiking, and beach walking, while supporting and sustaining cultural values, natural biodiversity and ecological processes. This unit provides for the protection of cultural features and access for social and ceremonial uses. This unit includes some sustainable use of natural resources where compatible with the heritage and natural values.

Management activities in this unit will focus on ensuring public understanding of historic and traditional use and providing recreational enjoyment. It will also ensure that public use does not negatively affect current and future Haida Nation activities. Management efforts will be directed to ensuring that access to this area and the use of this area occurs in such a way that the cultural and natural values are maintained.

Management Unit Type 5

The unit protects some outstanding examples of natural biological diversity, and encompasses much of the marine portion of Kunx̱alas and the eastern shoreline of Moresby Island and upland forested area, from Gray Point south towards Cumshewa Inlet.

The intent of Management Unit Type 5¹⁴ is to provide opportunities for limited access recreation in a largely undisturbed landscape while protecting significant cultural and natural features, and protecting Haida cultural features and access for social and ceremonial uses. This unit also allows for some sustainable use of natural resources where compatible with the values of Kunx̱alas.

Management activities in the unit will focus on protecting cultural and natural values, and ensuring public understanding of historic and current traditional use. Management efforts will be directed to ensuring that access to this area and the use of this area occurs in such a way that the cultural and natural values are maintained.

¹³ This unit corresponds to the BC Parks Intensive Recreation Zone.

¹⁴ This unit corresponds to the BC Parks Nature Recreation Zone.

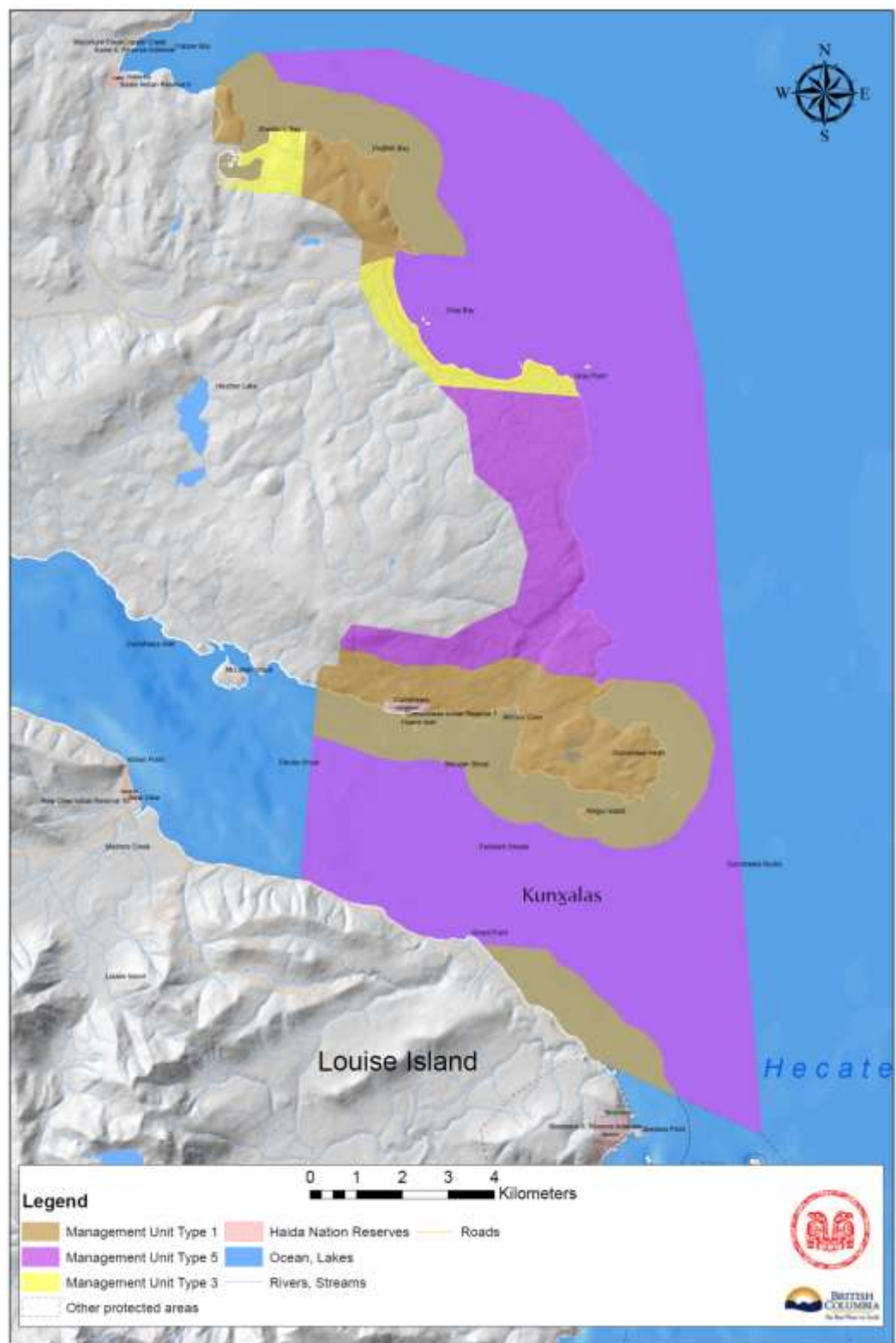


Figure 3. Kunxalas Management Zones Map

4.0 Plan Implementation

Implementation of the Kunxalas Management Plan will involve identifying strategies and achieving stated performance measures, while focusing on implementing high priority strategies. Strategies and performance measures will be prioritized in terms of cost, feasibility and overall benefit to management.

4.1 Implementation Resources

The Parties will develop and maintain a collaborative workplan for the protected areas. Items to be included in the workplan will include a description of the resources available during a given time period including staff and any additional operating or project funds that may support identified initiatives. The Haida Nation will dedicate staff and resources as funding allocations permit. The Ministry of Environment will seek project-specific funding to implement priority strategies and monitor key performance measures, subject to provincial funding availability. Specific projects will be evaluated for priority in relation to the overall protected areas system. Many of the initiatives contemplated are not funded as part of core ministry activities so jointly seeking funds from available funding sources either provincially or externally will be considered.

Permit holders will be required to collect and provide information related to performance measures and the overall state of Kunxalas. Such requirements will be defined in approved permits and in any protocols between the Haida Nation and the permittee.

4.2 Priority Implementation

As part of developing on-going workplans, priorities will be developed for the implementation of strategies and performance measures. A key priority is to implement management strategies which support cultural use and cultural inventory information. These priorities will be developed based on Haida Nation and provincial interests taking into account the requirements of other protected areas on Haida Gwaii such as developing baseline data to support management strategies.

4.3 Reporting

The Parties will prepare a summary bi-annual report describing progress on implementation of the protected area management plans.

4.4 Management Plan Review

In order to ensure the management of Kunxalas remains relevant and effective, an adaptive management approach will be used. Adaptive management involves a five-step process of planning, action, monitoring, evaluation and revision of the management plan to reflect lessons learned, changing circumstances and/or objectives achieved.

The management plan will be reviewed as required by the Parties and may be affirmed, revised, or amended by written agreement. A review of the management plan should generally be triggered by the complexities of the management issues in the protected area and/or a significant change in circumstances (e.g., a natural disaster, major environmental change or discovery of a major new archaeological site), and not by a specific time period.

A management plan review looks for any necessary updates to the management plan that are required to keep management direction current and relevant, correct the intent of a policy statement or address some error or omission. Any updates or changes to the content of the management plan will be addressed through a formal management plan amendment process. The amendment process will include an opportunity for public input.

Appendix 1 – Appropriate Uses Chart

The following table lists existing and potential future uses or activities in Kunxalas. However, it is not an exhaustive list of all uses that may be considered in this protected area. The table also indicates the uses which the management planning process has confirmed are not appropriate in Kunxalas. Additionally, a permit cannot be issued for commercial logging, mining, or hydroelectric power generation, other than local run-of-the-river projects that supply power to approved uses in Kunxalas or nearby communities that do not otherwise have access to hydro-electric power.

The table must be reviewed in conjunction with the other sections of the management plan, including the descriptions, vision, objectives and strategies. Uses are subject to existing policies and any relevant impact assessment processes.

Activity/Facility	Management Unit		
	Type 1 ¹⁵	Type 3 ¹⁶	Type 5 ¹⁷
Cultural Heritage			
Cultural, Ceremonial, Food Gathering and Social Uses	Y	Y	Y
Cultural Infrastructure (facility-based)	Y	Y	Y
Natural Heritage			
Fire Management ¹⁸	Y	Y	Y
Forest Insect/Disease Control	Y	Y	Y
Noxious Weed Control	Y	Y	Y
Scientific Research	Y	Y	Y
Recreation			
Administrative Buildings and Compounds	N	N	N
Aircraft Access	Y	Y	Y
Anchorage	Y	N/A	Y
Backcountry Huts and Shelters	N	N	Y
Boat Launches	N	N	N
Boating (Motorized)	Y	Y	Y
Boating (Non-motorized)	Y	Y	Y
Camping – backcountry or boat accessible	Y	Y	Y
Campsites and Picnic Areas – road accessible	N	Y	N
Commercial Recreation (facility-based)	N	N	N
Commercial Recreation (no facilities)	Y	Y	Y
Fishing	Y	Y	Y
Heli-hiking	N	N	N
Hiking/Backpacking/Walking	Y	Y	Y

¹⁵ This unit covers 1,476 hectares of land and 2,699 hectares of marine foreshore in Kunxalas.

¹⁶ This unit covers 451 hectares of land and 0 hectares of marine foreshore in Kunxalas.

¹⁷ This unit covers 1,428 hectares of land and 9,665 hectares of marine foreshore in Kunxalas.

¹⁸ As per fire management plan.

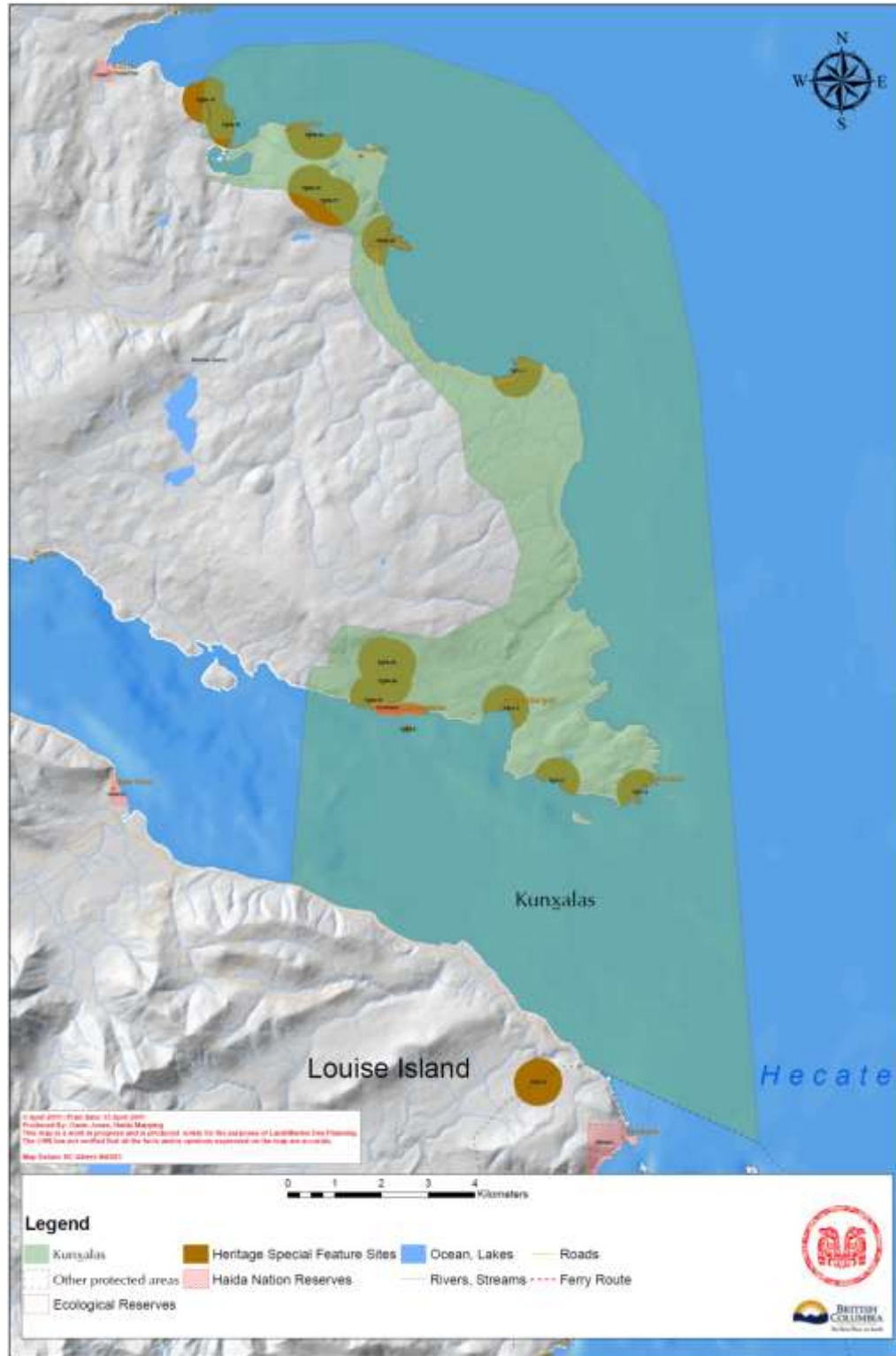
Activity/Facility	Management Unit		
	Type 1 ¹⁵	Type 3 ¹⁶	Type 5 ¹⁷
Hunting ¹⁹	Y	Y	Y
Interpretation and Information Buildings / Signs	Y	Y	Y
Mechanized Off-road Access (non-motorized – i.e., mountain biking)	N	Y	N
Motorized Off-road Access (i.e., 4x4, motorcycles)	N	N1	N
Pack Animal Use	N	N	N
Trails (hiking)	Y	Y	Y
Wharves/docks	N	N	N
Wildlife/Nature Viewing	Y	Y	Y
Respectful Use of Natural Values			
Angling Guiding	Y	Y	Y
Aquaculture (finfish)	N	N/A	N
Aquaculture (shellfish)	N	N/A	Y
Commercial Botanical Forest Products	N	Y	Y
Commercial Filming	Y	Y	Y
Commercial Marine Plant Harvesting	N	N/A	Y
Commercial Herring Spawn on Kelp	N	N/A	Y
Communication Sites	N	N	N
Grazing (domestic livestock)	N	N	N
Guide Outfitting ²⁰	Y	Y	Y
Independent Hydro Electric Power Projects & Infrastructure	N	N	N
Marine-based Log Recovery	Y	N/A	Y
Trapping	Y	Y	Y

- Y Appropriate
N Not appropriate
N1 Not appropriate except for expressed management purposes as identified in the Management Plan
N2 Not appropriate, but if the specific activity or facility existed at the time of establishment of the protected area, it is normally appropriate for it to continue
N/A Not applicable

¹⁹ The management of black bear hunting will be consistent with outcomes of negotiations between the Haida Nation and Province of British Columbia. If required, changes will be reflected in amendments to this management plan.

²⁰ The guide outfitting certificate is owned by the Council of the Haida Nation. There will be no commercial black bear hunting.

Appendix 2 – Heritage Special Feature Sites



Kunxalas Management Plan

Approved by:



April Churchill
Vice President of the Haida Nation

July 29, 2011

Date



Brian Bawtinheimer
Director, Parks Planning & Management Branch
BC Parks

August 2, 2011

Date

Back Cover Photo: Brandin Schultz

